



EUROPEAN UNION

Erasmus+

Enriching lives, opening minds.

**Yes you can!**



**Travel GREEN with Erasmus+**

The Programme supports sustainable travels:  
**Get onboard!**



## Every action counts, including yours...

### ...Erasmus+ helps you make it happen!

Today, you can choose to **travel green with Erasmus+**.

The European Commission has introduced a support to cover the costs of **green travels** from participants' place of origin to the venue of the activity and return.

This measure refers to all participants involved in an Erasmus+ mobility action.

Discover how much CO<sub>2</sub>e you would emit for this journey:



 emissions



**TRAIN 2.004 km - 5.87 kg CO<sub>2</sub>e**



**BUS 1.939 km - 72.8 kg CO<sub>2</sub>e**



**ELECTRIC CAR SHARING 1.939 km - 40.1 kg CO<sub>2</sub>e**



**THERMAL CAR SHARING 1.939 km - 84.4 kg CO<sub>2</sub>e**

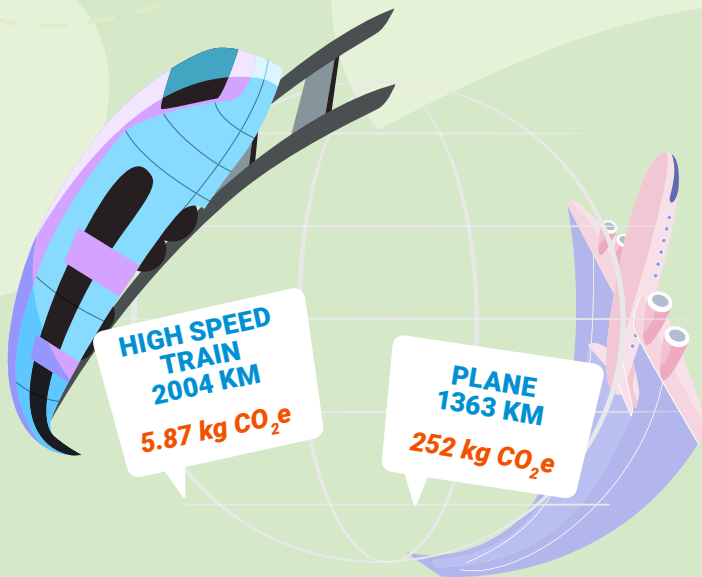


**PLANE 1.363 km - 252 kg CO<sub>2</sub>e**



Check out your carbon footprint here:

<https://impactco2.fr/outils/transport>



With over **17 million** involved in the Programme since its launch in 1987, Erasmus+ is well aware of the importance of reducing the **environmental impact** of international mobility: a valuable and unique experience which, however, in most cases until now, has taken place by plane—one of the most environmentally impactful means of transport.

Support to travel costs for participants from their sending institution to their hosting one and back:

Travel distances	Green travel
▶ 10-99 km	▶ 56 €
▶ 100-499 km	▶ 285 €
▶ 500-1.999 km	▶ 417 €
▶ 2.000-2.999 km	▶ 535 €
▶ 3.000-3.999 km	▶ 785 €
▶ 4.000-7.999 km	▶ 1.188 €
▶ 8.000 km or more	▶ 1.735 €



## What is green travel?

It is a journey made for at least half of the trip using **low-emission** means of transport, such as buses, trains, carpooling or bicycles.

Boat travel is considered green if combined with other low-emission transport means.

## Good to know

- To receive the green travel support, a **self-declaration** signed by the participant is required, confirming the use of sustainable means of transport to reach the venue of the activity.
- The applicant must indicate the distance between the place of origin and the venue of the activity by using the **distance calculator** supported by the European Commission: [http://ec.europa.eu/programmes/erasmus-plus/tools/distance\\_en.htm](http://ec.europa.eu/programmes/erasmus-plus/tools/distance_en.htm)  
For example, in the case a mobility from Rome to Madrid, the applicant will calculate the distance from Rome to Madrid (1.365.28 km) and then select the applicable distance band (i.e. between 500 and 1.999 km).
- If necessary, individual support to cover subsistence costs is eligible for travel time before and after the activity, with a **maximum of six travel days** using low-emissions means of transport.
- Below 500 KM, participants will, as a general rule, travel with **low-emissions** means of transport.
- Over 500 KM, participants are strongly **encouraged** to use a combination of different modes of transport to make their travel more sustainable –for example, by combining a sustainable mode of transport with a flight rather than taking two flights in case of connections.



LEARN MORE > [www.erasmusplus.it](http://www.erasmusplus.it)



#ErasmusGreen

Environmental sustainability and the fight against climate change, Diversity and inclusion, Participation in democratic life, Digital transformation: these are the four cross-cutting priorities of the Erasmus+ 2021-2027 programme. These four priorities reflect shared European values and address the key challenges of today's society.



Ministero dell'Istruzione  
e del Merito



Ministero dell'Università  
e della Ricerca

AGENZIA NAZIONALE  
**ERASMUS+** **INDIRE**